

# Indicative layout plan - Type 4

# 328

reserve road  
cheltenham

**Hallmarc**  
Business Park  
BAYSIDE



## BUILDING TYPE 4

Example shown - Units 42 & 43

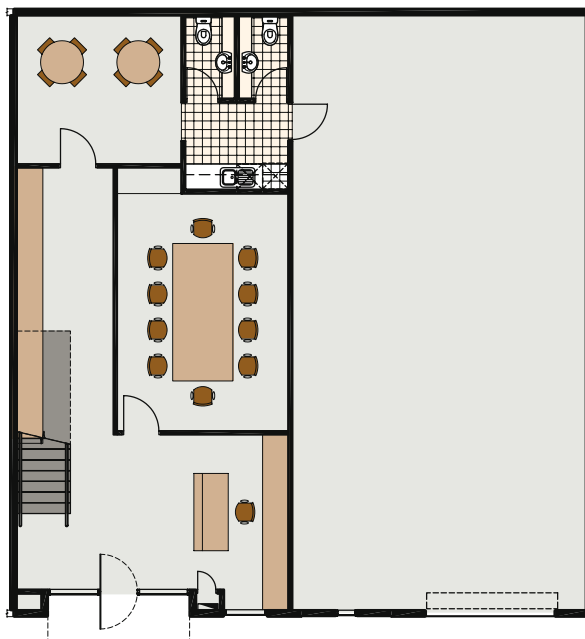
Ground Floor\* = 188.0

First Floor\* = 88.0

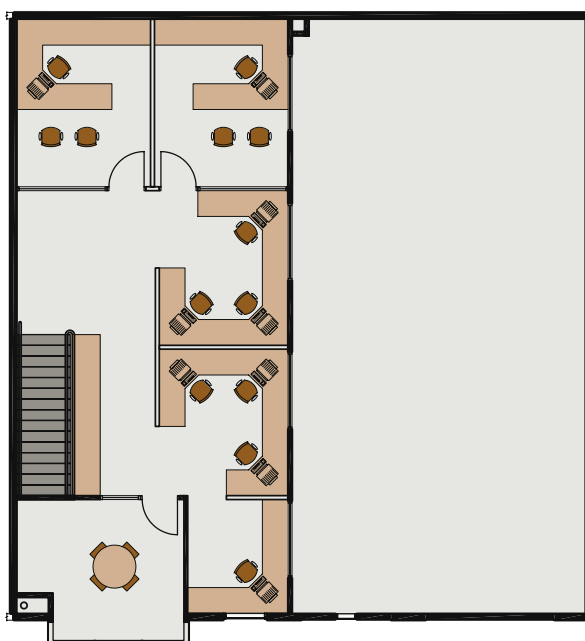
Total\* = 276.80

- Individual layout designs available to suit your needs
- Building type 4 includes - units 11, 40-44
- Areas ranging from 249.90m<sup>2</sup> - 293.30m<sup>2</sup>

\*All stated areas and dimensions are approximate. Particulars herein are for information only and do not constitute any representation by the owner or agent.



Ground Floor



First Floor

[www.328reserve.com.au](http://www.328reserve.com.au)

**Hallmarc**  
Developments

9660 9000

[www.hallmarc.com.au](http://www.hallmarc.com.au)  
Level 14, 257 Collins St, Melbourne