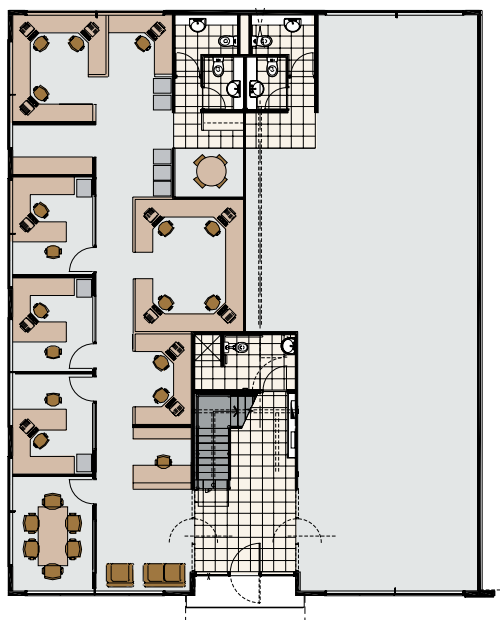


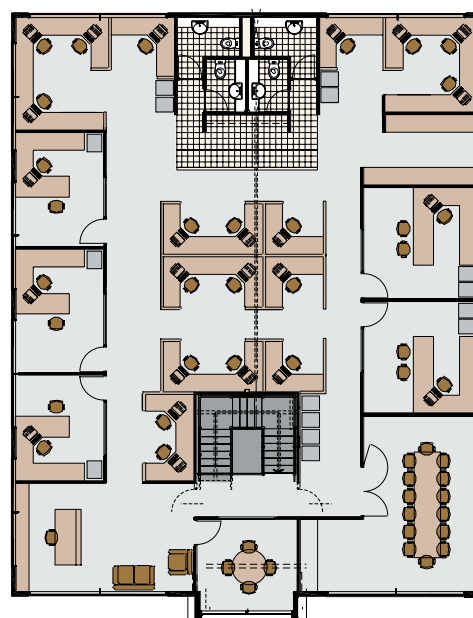
Indicative layout plan - Type 5

75

lorimer street
southbank



Ground Floor



First Floor

BUILDING TYPE 5

Example Shown - Unit 18

Part Ground Floor* = 148.30

Whole Ground Floor* = 295

Part First Floor* = 153.90

Whole First Floor* = 306.30

Whole Total* = 627.70

* Individual layout designs
available to suit your needs

* Building Type 5 includes -
Units 18, 19, 20

* Area available - 627.70

*All stated areas and dimensions are approximate. Particulars herein are for information only and do not constitute any representation by the owner or agent.

www.75lorimerstreet.com.au

Hallmarc

Developments

03 9660 9000

www.hallmarc.com.au

Level 14, 257 Collins St, Melbourne