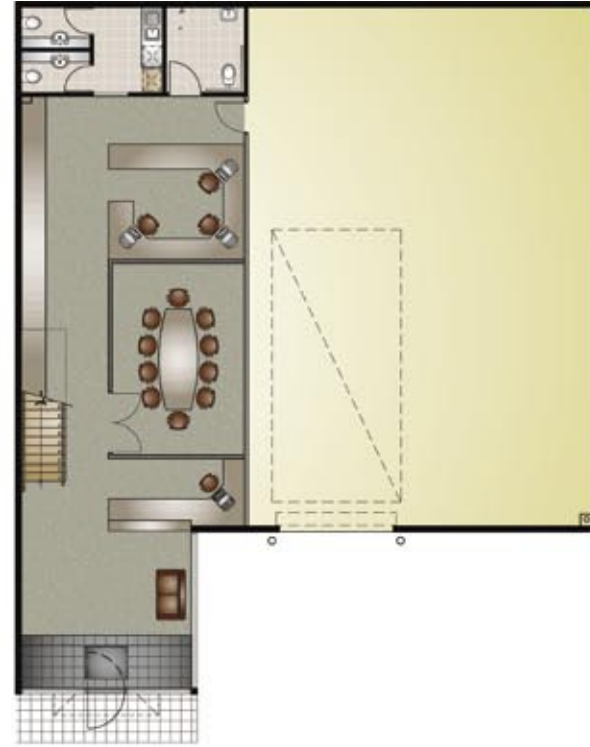
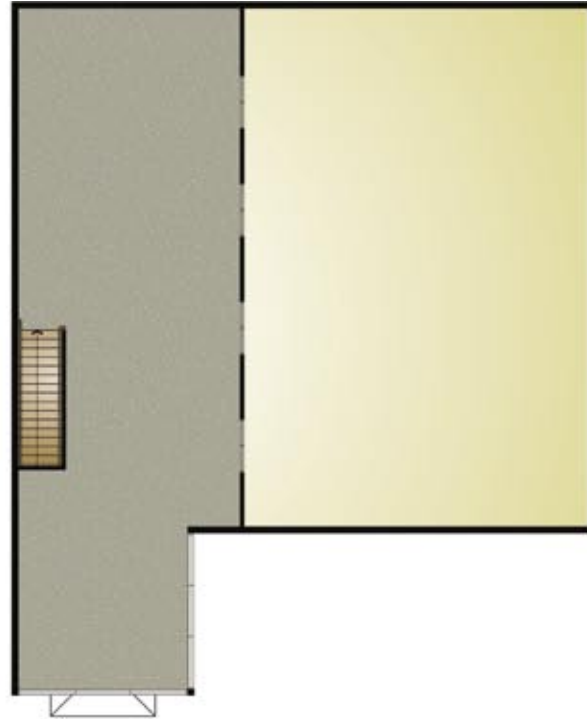


Building Type 4



Ground Floor Plan

First Floor Plan

Suggested Ground Floor Layout

Suggested First Floor Layout

Example shown - Unit E9

Office/Display = 230.80m²
Warehouse = 144.30m²
Total = 375.10m²

- Individual layout designs available to suit your needs
- Building Type 4 includes - Units E9, E10, F9 & F10
- Areas available from 375.10m² to 399.60m²